



# HRW Big Boat Series 2015

20 – 21 June 2015 Hankø, Norway

## Sailing Instructions

The Organizing Authority is Royal Norwegian Yacht Club (KNS) in conjunction with Fredrikstad Seilforening (FS) and Norwegian Offshore Racing Club (NORC).

The HRW Big Boat Series will be part of NORC's ranking series.

### **1. RULES**

- 1.1 The regatta will be governed by the rules as defined in The Racing Rules of Sailing.
- 1.2 The following prescription and rules of the Norwegian Sailing Federation will apply:  
“When rules 30.2 or 30.3 apply and the starting vessel is not a starting mark, but lies on the extension of the starting line, the base of the triangle in the rules shall run from the starting vessel along the extension and the starting line, to the starting mark at the opposite end of the starting line.”
- 1.3 Classes are governed by the current versions of the ORC Rating System Rules, the rules and regulations of each one design class, and any classification limitations or requirements on crews.
- 1.4 The ISAF Offshore Special Regulations (OSR) category 4 applies to all classes.
- 1.5 If there is a conflict between languages, the English text will take precedence.

### **2. NOTICES TO COMPETITORS**

Notices to competitors will be posted on the official notice board located at Hankø Yacht Club.

# HRW Big Boat Series 2015

## Sailing Instructions

### 3. CHANGES TO SAILING INSTRUCTIONS

Any change to the sailing instructions will be posted before 09:00 hours on the day it will take effect, except that any change to the schedule of races will be posted by 20:00 hours on the day before it will take effect.

### 4. SIGNALS MADE ASHORE

- 4.1 Signals made ashore will be displayed at Hankø Yacht Club.
- 4.2 When flag AP is displayed ashore, '1 minute' is replaced with 'not less than 60 minutes' in race signal AP. Boats are requested not to leave the harbor until Flag AP is lowered. This changes Race Signal AP.
- 4.3 When flag Y is displayed ashore, rule 40 applies at all times while afloat. This changes the Part 4 preamble and rule 40.

### 5. SCHEDULE OF EVENTS

- 5.1 Registration schedule:

| <b>Date</b>      | <b>Scheduled times</b> |
|------------------|------------------------|
| Friday 19 June   | 18:00 – 22:00 hours    |
| Saturday 20 June | 09:00 – 11:00 hours    |

- 5.2 Schedule of races:

| <b>Date</b>      | <b>Scheduled times</b> | <b>Scheduled number of races</b> |
|------------------|------------------------|----------------------------------|
| Saturday 20 June | 12:00 hours            | Maximum 3 races                  |
|                  | Ca. 19:30              | Opening ceremony                 |
| Sunday 21 June   | 11:00 hours            | Maximum 3 races                  |
|                  | Ca. 19.00              | Prize Giving ceremony            |

- 5.3 The Race Committee reserve the right to modify the above programme according to weather conditions and/or other unforeseen reasons.
- 5.4 Six (6) races are scheduled. There will be no more than three (3) races per day.
- 5.5 Flag Q displayed at the finishing line means "There will be one more race after the one in progress."
- 5.6 Flag R displayed at the finishing line means "There will be no more races after the one in progress".
- 5.7 No warning signal will be given after 15:00 hours on the last day of sailing unless it follows signal of general recall or postponement of a race whose first warning signal had been made before 15:00 hrs.

### 6. CLASS FLAGS

| <b>Class</b> | <b>Class Flag</b> |
|--------------|-------------------|
| ORC          | D                 |
| Melges 24    | E                 |

# HRW Big Boat Series 2015

## Sailing Instructions

### **7. RACING AREA**

The racing area is approximately as shown in Attachment A.

### **8. THE COURSES**

- 8.1 The diagram in Attachment B shows the course, the order in which marks are to be passed and the side on which each mark is to be left.
- 8.2 No later than the warning signal, the race committee starting vessel may display the approximate compass bearing to the first mark.
- 8.3 An offset mark may be placed near mark 1, and shall be left to port.
- 8.4 If there is no gate, mark 2 shall be left to port.

### **9. MARKS**

- 9.1 Mark 1 will be an inflatable cylindrical green buoy.
- 9.2 Marks 2S and 2P will be inflatable cylindrical green buoys.
- 9.3 The starting marks will be round red buoys.
- 9.4 The offset mark and finishing mark will be round red buoys.
- 9.5 New marks, as provided in instruction 11.1, will be round red buoys.
- 9.6 A race committee boat signaling a change of a leg of the course is a mark as provided in instruction 11.2. The changes rule 28.2.

### **10. THE START**

- 10.1 Races will be started by using rule 26 with the warning signal given 5 minutes before the starting signal.
- 10.2 A boat starting later than 5 minutes after her starting signal will be scored DNS. This changes rules A4.
- 10.3 The starting line will be between a staff displaying an orange flag on the race committee boat at the starboard end and a starting mark at the port end.
- 10.4 If the race committee signal boat cannot anchor safely due to weather conditions, or other navigational or operational conditions, the orange flag may be replaced by a starting mark.
- 10.5 As soon as practicable after signalling an individual recall, the race committee will attempt to broadcast the sail number or name of boat that has not started and is identified as OCS on VHF channel 77. Failure or delay to broadcast will not be grounds for a request for redress. This changes RRS 62.1(a).

### **11. CHANGE OF THE NEXT LEG OF THE COURSE**

- 11.1 To change the next mark of the course, the race committee will lay a new mark (or move the finishing line) and remove the original mark as soon as practicable. When in a subsequent change a new mark is replaced, it will be replaced by an original mark.
- 11.2 A new windward mark will be placed without the offset mark.
- 11.3 Except at a gate, boats shall pass between the race committee boat signalling the change of the next leg and the nearby mark, leaving the mark to port and the race committee boat to starboard. This changes rule 28.1.

# HRW Big Boat Series 2015

## Sailing Instructions

### **12. THE FINISH**

- 12.1 The finishing line will be between a staff displaying an orange flag on the race committee signal boat and a finishing mark or between finishing marks.
- 12.2 If the race committee signal boat cannot anchor safely due to weather conditions or other navigational or operational conditions, it will be replaced by a finishing mark.
- 12.3 The finishing line may be shorter than the starting line.

### **13. PENALTY SYSTEM**

- 13.1 RRS 44.1 is changed so that the Two-Turns penalty is replaced by the One-Turn penalty .
- 13.2 A boat that has taken a penalty under RRS 44 shall fill in an acknowledgement form and deliver it to the race office within the protest time.

### **14. TIME LIMIT**

- 14.1 The time limit for the race will be 2 hours.
- 14.2 Boats failing to finish within 30 minutes after the first boat in each class sails the course and finishes will be scored Did Not Finish without a hearing. This changes rules 35, A4 and A5.

### **15. PROTESTS AND REQUESTS FOR REDRESS**

- 15.1 In addition to complying with rule 61.1(a), a protesting boat shall inform the race committee of her intention to protest and the identity of the protested boat(s) as soon as possible after finishing or retiring. This changes rule 61.
- 15.2 Protest forms are available at the race office. Protests and requests for redress or reopening shall be delivered there within the appropriate time limit.
- 15.3 The protest time limit is 90 minutes after the last boat has finished the last race of the day.
- 15.4 Notices will be posted no later than 30 minutes after the protest time limit to inform competitors where and when there is a hearing in which they are parties or named as witnesses. Hearings will be held in the protest room located at Hankø Yacht Club.
- 15.5 Notices of protests by the race committee or the jury will be posted to inform boats under rule 61.1(b).
- 15.6 Breaches of instructions 17, 19, 20, 21, 23, 24, 25, 26, 27 and 28 will not be grounds for a protest by a boat. This changes rule 60.1(a). Penalties for these breaches and for minor breaches of Special Regulations or measurement rules may be less than disqualification if the jury so decides. The scoring abbreviation for a discretionary penalty imposed under this instruction will be DPI.
- 15.7 On the last scheduled day of racing, a request for reopening a hearing shall be delivered
  - a) within the protest time limit if the requesting party was informed of the decision on the previous day,
  - b) no later than 30 minutes after the requesting party was informed of the decision on that day.

This changes rule 66.

# HRW Big Boat Series 2015

## Sailing Instructions

- 15.8 On the last scheduled day of racing a request for redress based on a jury decision shall be delivered no later than 30 minutes after the decision was posted. This changes rule 62.2.

### **16. SCORING**

- 16.1 The Low Point Scoring System of RRS Appendix A will apply except the value of a first place finish shall be 0.75 instead of 1.00.
- 16.2 Scoring system to be used is Performance Curve Scoring with Construction course.
- 16.3 For the Melges 24 class the Low Point Scoring System of RRS Appendix A will apply.
- 16.4 If five (5) or more races are completed, a boats series score will be the total of her race scores excluding her worst score.

### **17. SAFETY REGULATIONS**

A boat that retires from a race shall notify the race committee as soon as possible.

### **18. REPLACEMENT OF CREW OR EQUIPMENT**

- 18.1 With reference to NOR 6.4, substitution of competitors after 12:00 hours on 22 June will only be allowed after prior written approval of the jury.
- 18.2 Substitution of damaged or lost sails or equipment will not be allowed unless approved by the race committee in writing prior to doing so. Written requests for substitution shall be made to the committee at the first reasonable opportunity.

### **19. IDENTIFICATION ON SAILS**

A boat shall comply with the requirements of Appendix G governing class insignia, national letters and numbers on sails. The race committee will protest a boat that is in breach of this rule.

### **20. EQUIPMENT AND MEASUREMENT CHECKS**

A boat or equipment may be inspected at any time for compliance with the class rules and sailing instructions. On the water, a boat may be instructed by a race committee measurer or an equipment inspector to proceed immediately to a designated area for inspection.

### **21. ADVERTISING**

Boats may be required to display advertising chosen and supplied by the organizing authority.

### **22. OFFICIAL BOATS**

- 22.1 Mark boats may be stationed beyond Mark 1 and in the proximity of Mark 2. At the finishing line, the mark boats may be stationed on the extension of the finishing line. When on station only, each mark boat will display Flag U.
- 22.2 The jury boat(s) will fly a blue flag with a white "J".
- 22.3 Failure of a mark boat to be on station or failure of any official boat to display her signal will not be grounds for a request for redress. This changes rule 62.1(a).

# HRW Big Boat Series 2015

## Sailing Instructions

### **23. SUPPORT BOATS**

Team leaders, coaches and other support personnel shall stay outside areas where boats are racing from the time of the preparatory signal for the first class to start until all boats have finished or retired or the race committee signals a postponement, general recall or abandonment.

### **24. TRASH DISPOSAL**

Boats shall not put trash in the water. Trash shall be carried back to the harbor and placed in a trash container.

### **25. HAUL-OUT RESTRICTIONS**

Boats shall not be hauled out during the regatta except with and according to the terms of prior written permission of the jury. Such permission shall only be granted in case of damage that needs repair ashore. The jury may request to be present during the haul-out and inspect the boat ashore. This instruction does not apply to a boat that withdraws from the event.

### **26. DIVING EQUIPMENT AND PLASTIC POOLS**

Underwater breathing apparatus and plastic pools or their equivalent shall not be used around the boats between the preparatory signal of the first race and the end of the regatta.

### **27. RADIO COMMUNICATION**

27.1 Except in an emergency, a boat shall neither make radio transmissions while racing nor receive radio communications not available to all boats. This restriction also applies to mobile phones.

27.2 The race committee signal boat will use VHF channel 77 for information. Missing or wrong information on VHF will not be grounds for redress. This changes rule 62.1(a).

### **28. PRIZES**

28.1 Prizes will be awarded to 1/3 of the participating boats in the HRW Big Boat Series.

28.2 The regatta is part of the NORC ranking series. Overall ranking results will be calculated based on an overall result list in accordance with the respective rules for each ranking series.

### **29. DISCLAIMER OF LIABILITY**

29.1 All those taking part in the regatta do so at their own risk and responsibility. The organizing authority, and any other party involved in the organization of the regatta, disclaim any and all responsibility whatsoever for loss, damage, injury, inconvenience or death that might occur to persons and materials, both ashore and at sea in conjunction with or prior to, during, or after the regatta as a consequence of participation in the event. Each boat owner or his representative accepts these terms by entering and registering for the race.

29.2 Specific attention is drawn to RRS Fundamental Rule 4, which states: "The responsibility for a boat's decision to participate in a race or to continue racing is hers alone".

# HRW Big Boat Series 2015

## Sailing Instructions

### 30. INSURANCE

Each participating boat shall be insured with valid third-party liability insurance with a minimum cover of NOK 4.000.000 or the equivalent from time of arrival to time of departure from Hankø.

### 31. MEDIA RIGHTS

By entering the event, competitors give the organizing authority the right to publish and / or broadcast in any media photos and videos taken of persons and boats during the event for the purpose of creating publicity for the event.

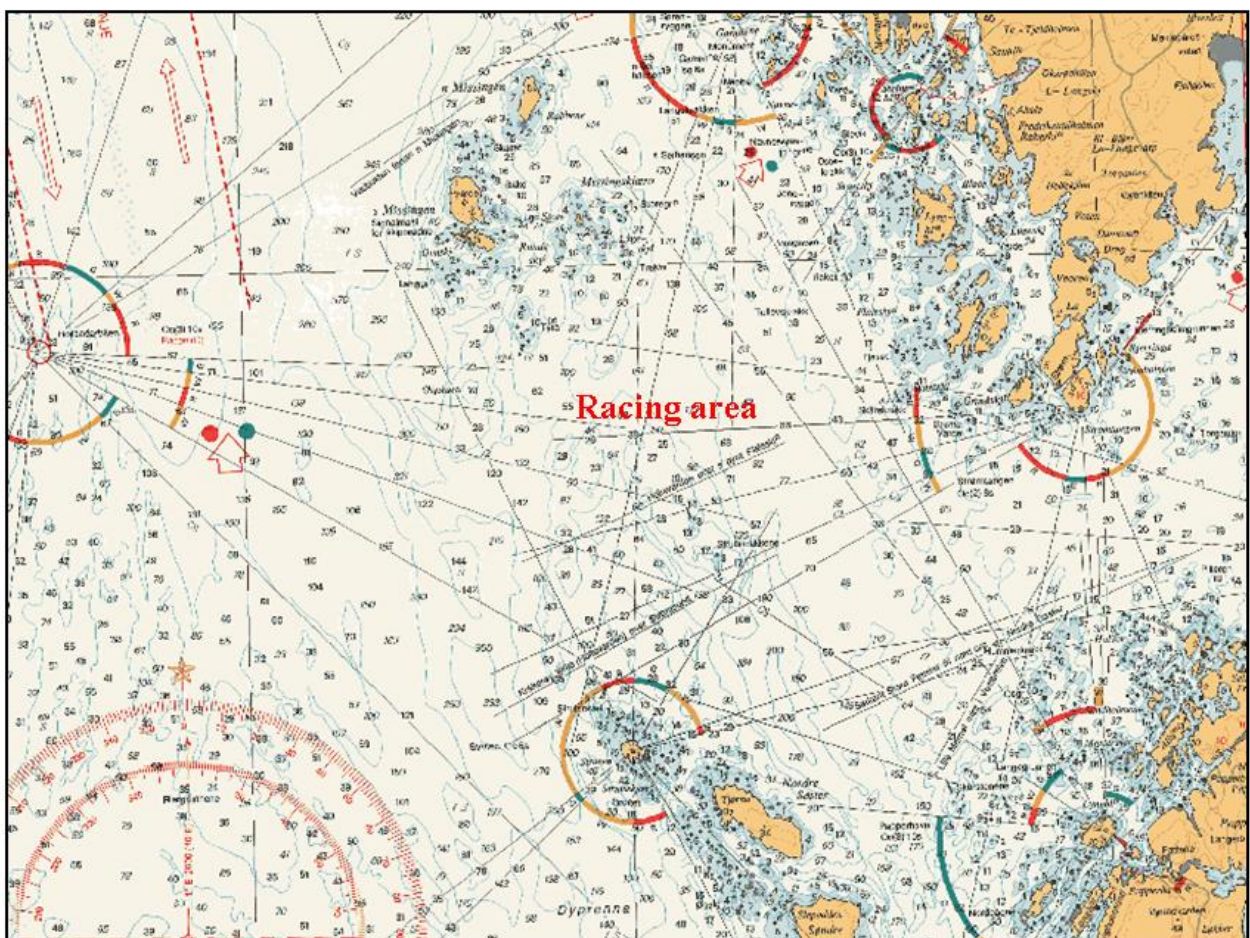
### FURTHER INFORMATION AND CONTACTS

Race Office +47 69 33 25 75

Hankø Yacht Club +47 69 33 22 21

Hankø Fjordhotell & Spa + 47 69 38 28 50

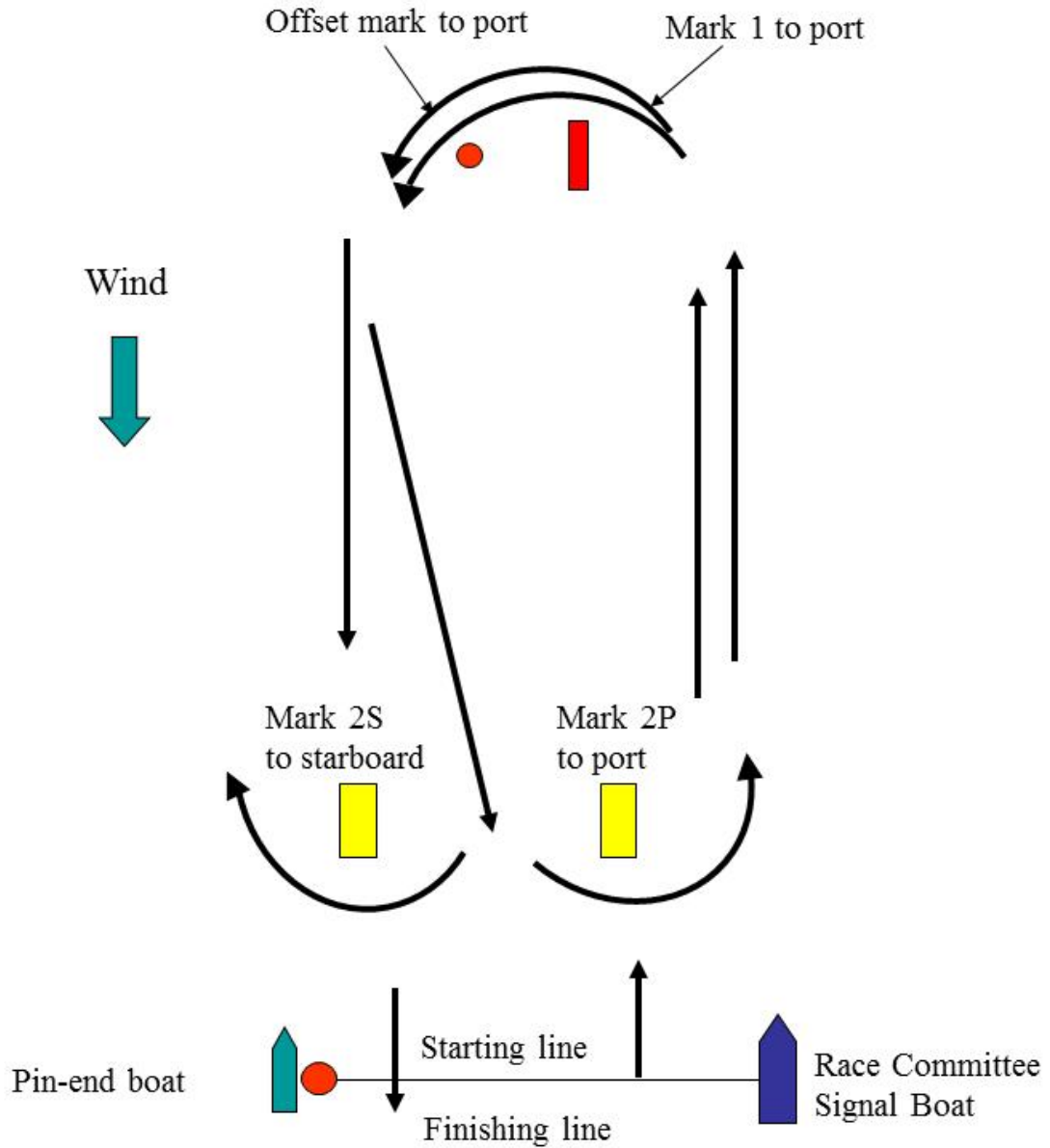
### Attachment A



Not for navigational use

HRW Big Boat Series 2015  
Sailing Instructions

**Attachment B – Course diagram (schematic)**



**Course description:**

**Start – 1 – Offset mark – 2S/2P – 1 – Offset mark - Finish**