

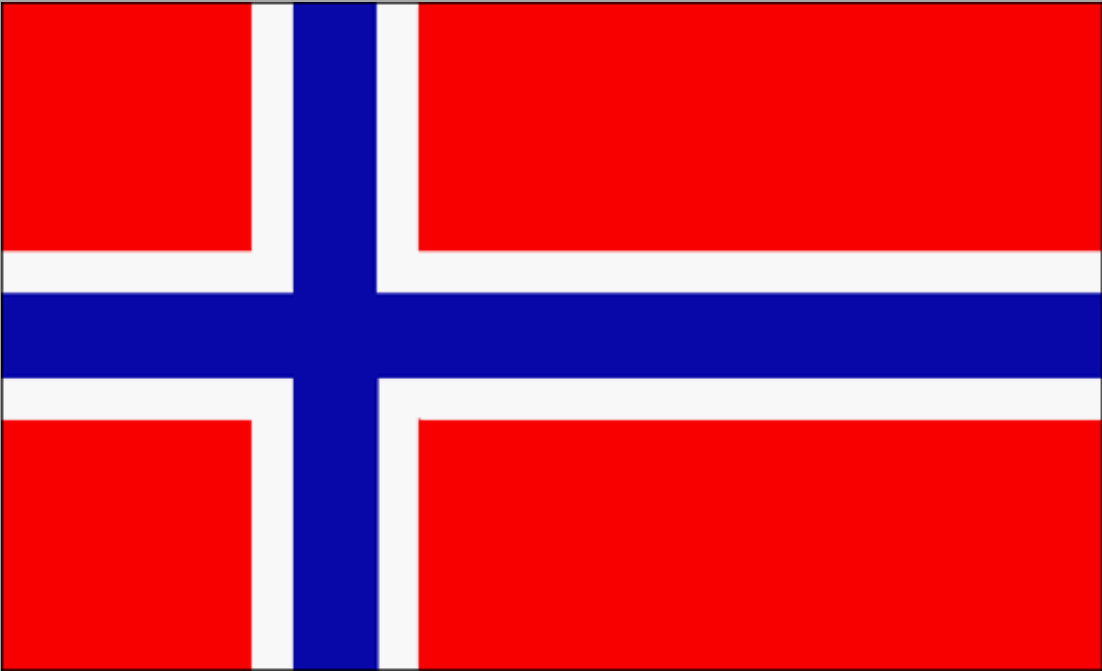
Skipper Meeting Shetland Race 2024



SHETLAND RACE

Lerwick Boating Club

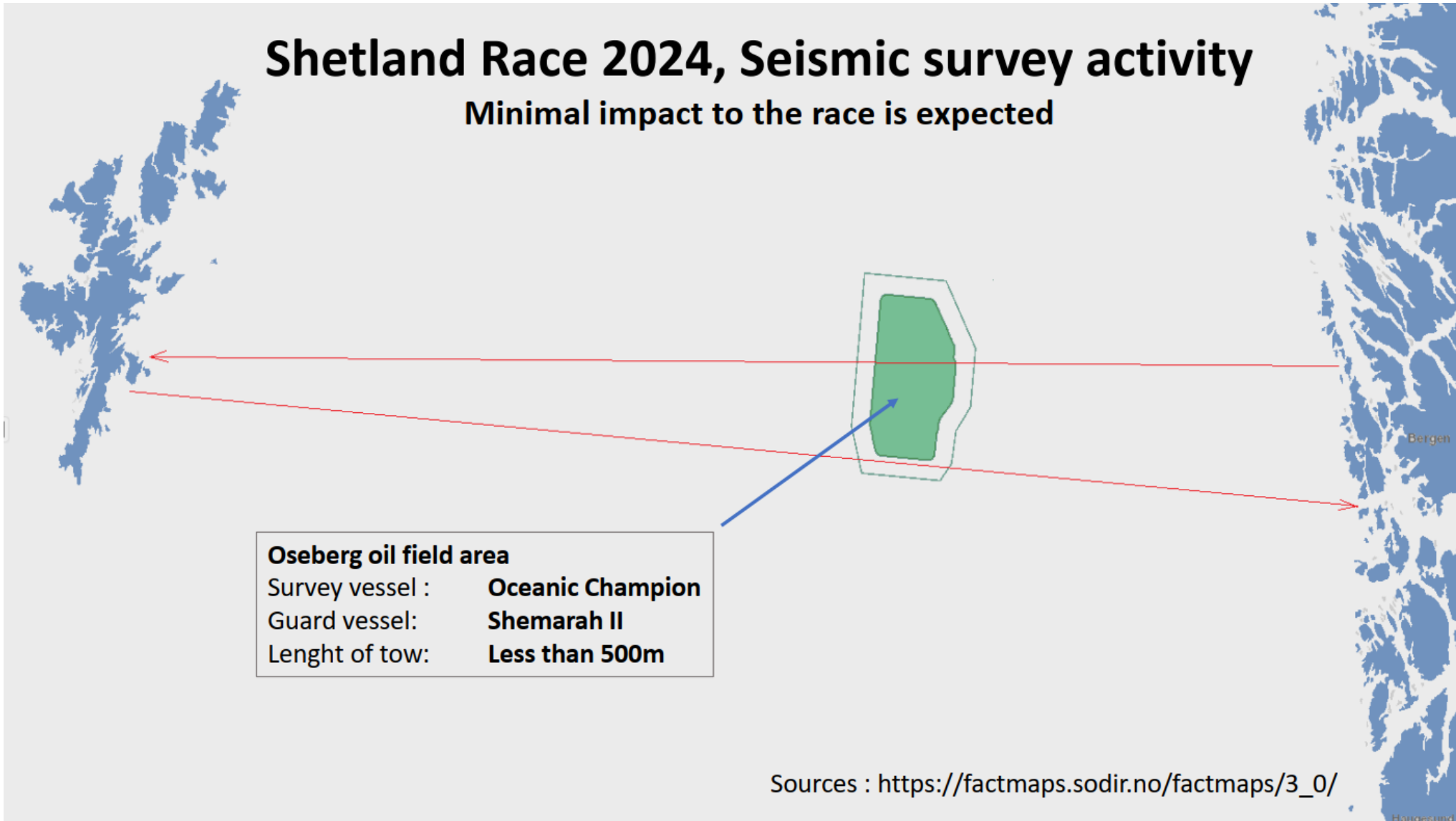
22.6.2024



Seismic activity North Sea

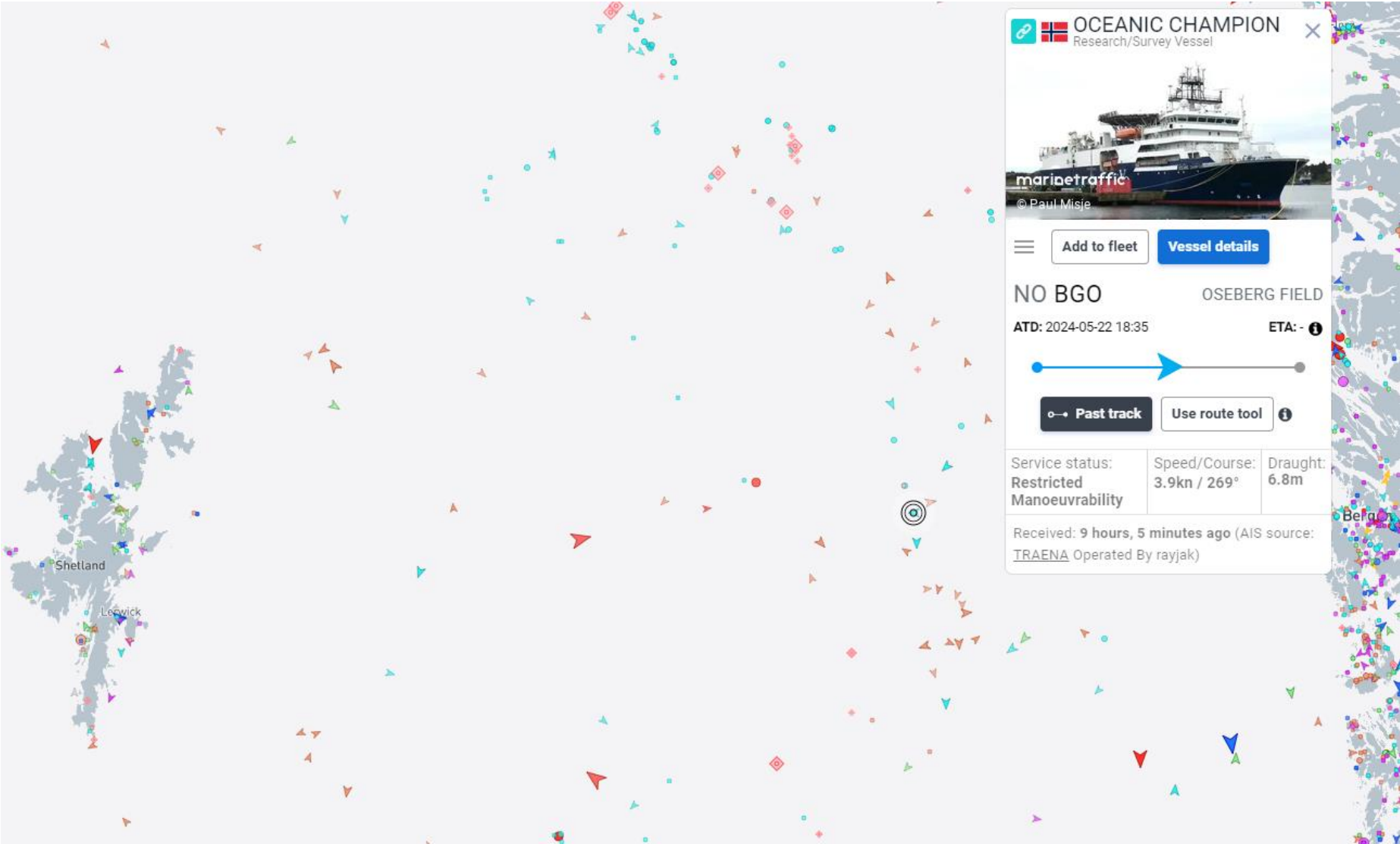
Shetland Race 2024, Seismic survey activity

Minimal impact to the race is expected

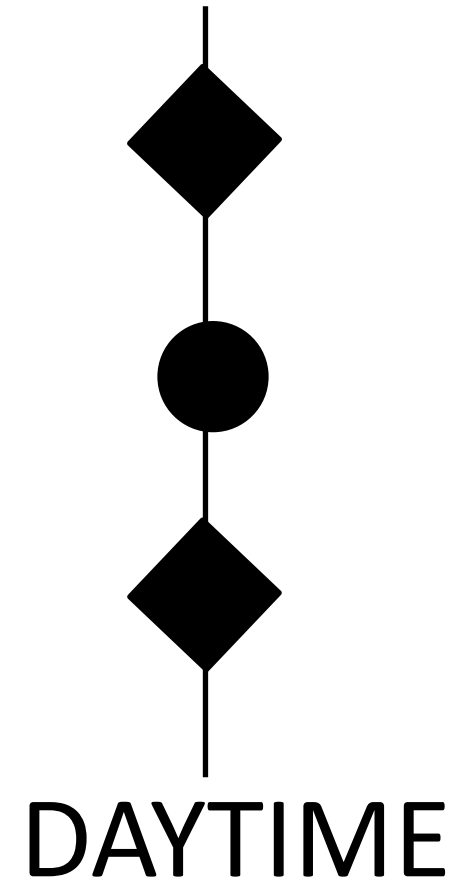


Thanks to Willy Forland, skipper on S/Y Levens, for research!

Oceanic Champion



Lanterns on vessels towing seismic acquisition equipment

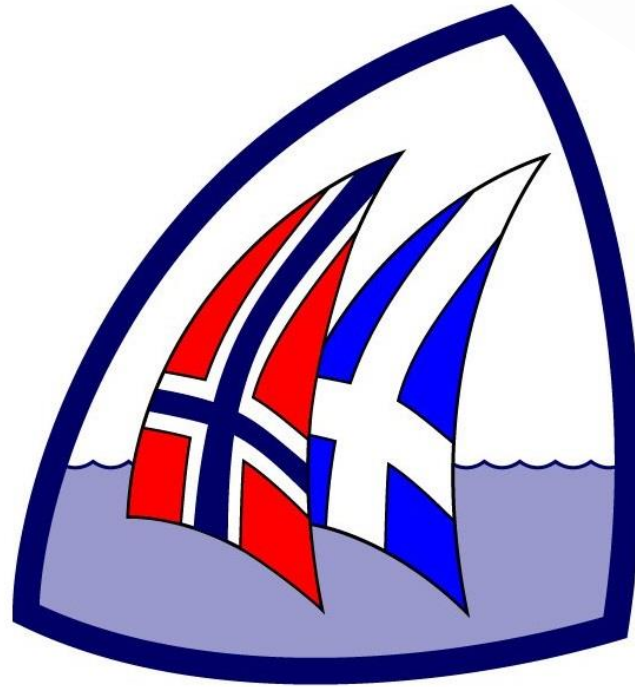


Installations in the North Sea





Instagram






#shetlandrace24

TRACKING

<http://shetlandrace.no>

<https://sailracesystem.no/regatta?regatta=3835>



MIN SIDE TIL FORSIDEN DELTAGERLISTE STARTLISTER TRACKING OM REGATTAEN FOR DELTAGERNE   

TRACKING BSR 2024

NYHETER



TRACKING 2024 >

16. JUNI 2024

Tracking of the event will be available as a separate pane on this side.

OM ARRANGEMENTET

ARRANGØR:	Vestland Seilkrets
DATO:	18.06.2024 - 24.06.2024
STED:	North Sea/Bergen - Shetland
PÅMELDINGSFRIST:	31.05.2024 kl: 23:59
STARTKONTINGENT:	5000 - 6000 NOK
ETTERANMELDINGSFRIST:	14.06.2024 kl: 23:59



APP STORE:
YB Races



Social Media

Check date and time on your photo/film device before leaving harbour. Preferably CEST.

USB memory sticks stacked with pictures and film to be delivered in Lerwick or Bergen.

Digital media can be sent to shetlandrace@gmail.com


STARTING LINE

17 Starting lines


17.2 Lerwick harbour:

The starting line in Lerwick harbour will be in Bressay Sound. (SI § 37 + Appendix 1)

18 Starting systems and signals

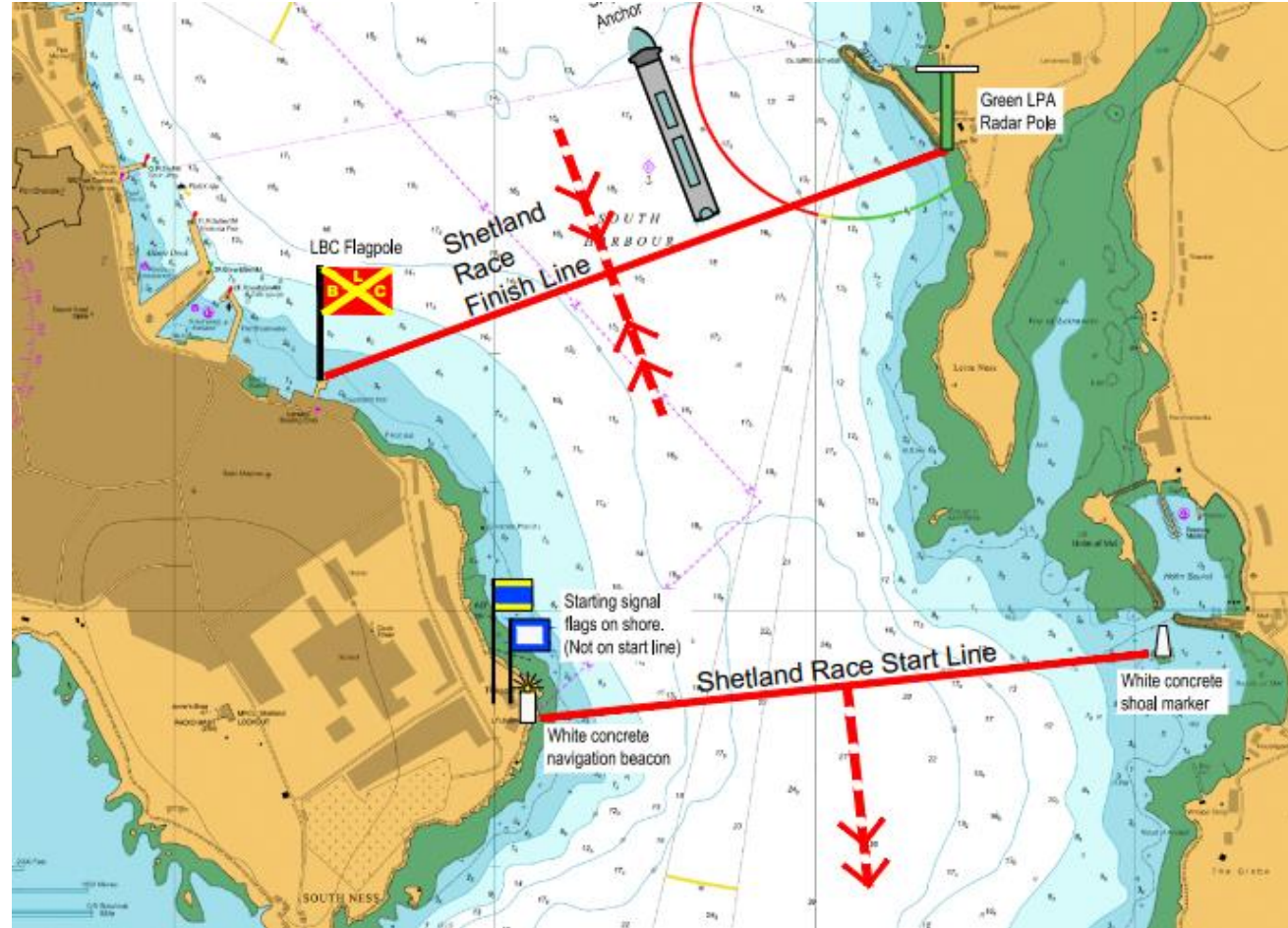
18.1 All classes start together using class flag "D" .

18.2 Races will be started using RRS 26 with an extra attention signal 10 min. before start.

Warning signal	5 min. before start	Flag "D" displayed	one sound
Preparatory signal	4 min. before start	Flag "P"  displayed	one sound
One minute signal	1 min. before start	Flag "P" removed	one long sound
Starting signal	0 min.	Flag "D" removed	one sound

18.3 During the starting procedure, if possible, the starter will hold an open line on VHF channel 8 and do count downs.

STARTING LINE



STARTING LINE



DATA ROAMING NORTH SEA

from: **Jan Åge Langeland**
to: Ulv K Hjellestad
date: 2 Jul 2018, 22:00
subject: Skip-Telenor
Maritime.

Her er det jeg nevnte om "piratnettet" til Telenor. Hvis telefonen ligger ombord med roaming på så blir det fort dyrt når email og sosiale media begynner å oppdatere av seg selv. Kanskje verdt et hint i neste års info? Det er jo mange som har roaming på nå som det er forholdsvis billig i EU.

Takk ellers for ypperlig arrangement.

Mvh
Jan-Åge

CAN BE EXPENSIVE!

QUOTE

Velkommen til Skip-Telenor Maritime. Prisinformasjon: Ringe til Norge, lokalt og mottak: 12,5/min, Data: 10/MB. Send SMS: 3,12/SMS. Alle priser er inkl.mva.

Fortsatt god reise. Hilsen Ice

UNQUOTE

REPORTING

VHF TRAFFIC

21.3 Reporting on the leg Lerwick – Bergen.

During the race eastwards from Lerwick to Bergen the boats shall report passing longitudes as declared in the following table:

Passing	Report to	VHF-channel
004° 00' east longitude	Kystradio Sør	Ch02 (Sleipner-A) Ch03 (Sotra) Ch05 (Lindås) Ch62 (Oseberg-A)

NOTE: Use correct c/s (possibly with associated mmsi), correct Vessel Name (up to c/s). It is recommended that competitors perform a radio check ship to ship before departure. Use maximum transmission power when contacting Kystradioen.

FINISHING LINE

22 Finishing lines

22.2 Korsfjorden:

The finishing line for the race Lerwick - Bergen is in Korsfjorden and will be between Marsteinen lighthouse (N060 07'52,69 E005 00'35,46) and Tekslo light (N060 09'19,29 E005 00'25,88).

A boat finishes by crossing the line in direction from west towards east (See SI § 38).

FINISHING LINE

38 Map (Finish Korsfjorden):

Finish Korsfjorden



FINISHING LINE

There are no finishing line watchmen at Marstein.

Simply fill in the declaration form and send via MMS or e-mail.

2 Race committee

The technical meaning of the word "Race Committee" only include the following persons during the race:

Race committee in Bergen			Race committee in Lerwick	
Chairman	Carl Olav Wickmann	+47 41326639	Chairman	Suzanne Shearer
Race Officer	Ulv K Hjellestad	+47 90064155 ulv@hjellestad.no		
Safety Officer	Svein Aaland	+47 91895610		



ANY CREW CHANGES?

**DO NOT TURN OFF TRACKER
WHEN PASSING FINISHING LINE!**

WAIT AT LEAST 30 min after passing finishing line.

(It is not necessary to turn the tracker off.)

**TRACKERS TO BE DELIVERED AT
BUNNPRIS HJELLESTAD**

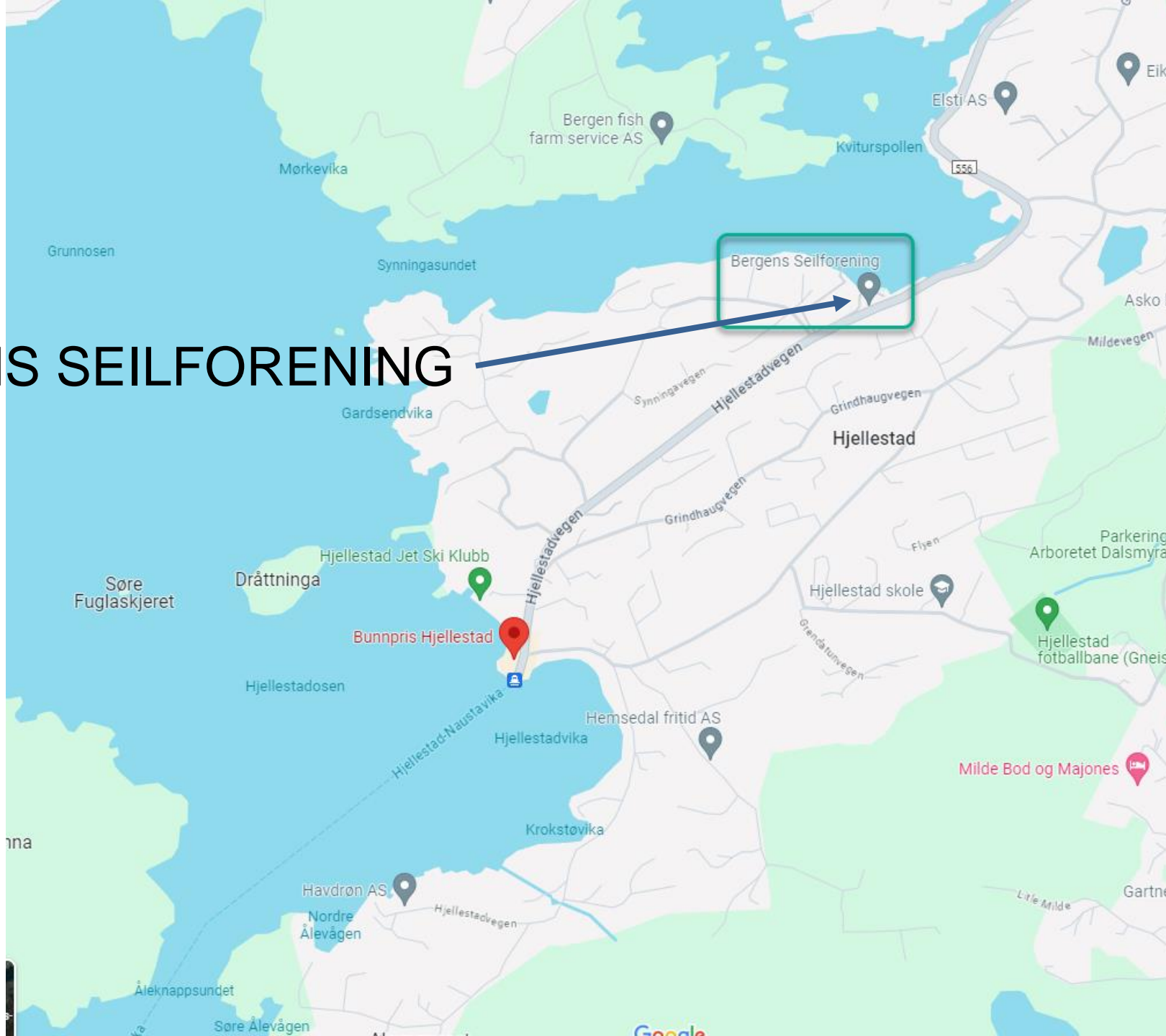
or

BERGENS SEILFORENING

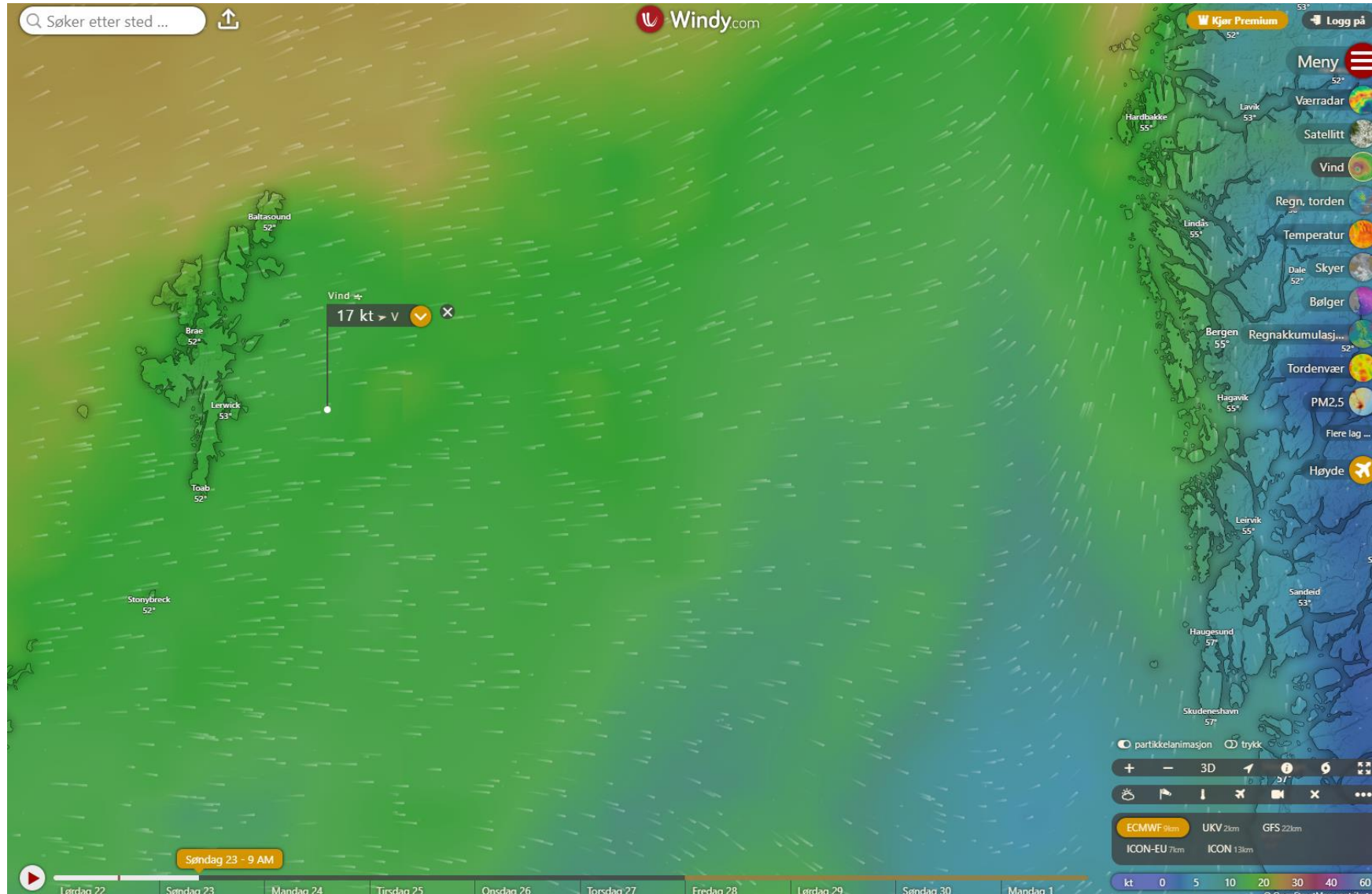
BUNNPRIS HJELLESTAD



BERGENS SEILFORENING



WEATHER BRIEF 0h



WEATHER BRIEF 6h



WEATHER BRIEF 12h



WEATHER BRIEF 18h



WEATHER BRIEF 24h



WEATHER BRIEF 30h



WEATHER BRIEF 36h



HOW TO PUT ON MULTIFUNCTIONAL HEADWEAR TO OBTAIN CORRECT WEARING