



SHETLAND RACE

Notice of Race Shetland Race 2025

The Bergen Shetland Races 2025, incorporating a rally for cruising boats, will be conducted on the waters of Bergen, the North Sea and the approach to Lerwick Harbour and vice versa.

The race is organized and conducted by:

Vestland Seilkrets (the Vestland Sailing Association of Norway) with the cooperation of the Lerwick Boating Club of Shetland.

1 RULES

1.1 The event is governed by the rules as defined in *The Racing Rules of Sailing (RRS)*.

1.2 *Norwegian Sports Federations rules regarding Anti-Doping Code. Responsible person onboard is responsible for informing all crewmembers.*

1.3 The latest version of the following rules will also apply:

- a) IMS Rules
 - b) ORC Rating Systems Rules
 - d) World Sailing Offshore Special Regulations (OSR) for Category 3 with following additions:
 - i) Life raft complying with OSR Category 2 is required.
 - ii) Boat's AIS shall be active from the first day of equipment inspection until the end of the event.
 - iii) At least the skipper or one crew member shall have ISAF Approved Offshore Personal Survival Training course.
- This changes OSR 4.04.

1.4 The navigation rules of the International Regulations for Preventing Collisions at Sea (IRPCAS replaces RRS Part 2 from [23:00] until [0500].

1.5 Boats carrying propane are required by Lerwick Harbour to have a gas detector installed.

1.6 Whilst a boat in the Cruising Division is operating under its engine, the relevant parts of the International Regulations for Preventing Collisions at Sea will replace the rules of RRS, Part 2 in their application to that boat.

1.7 A breach of RRS 56.2 shall not be grounds for protest by a boat. This changes RRS 60.

1.8 If there is a conflict between languages the English text takes precedence.

2 SAILING INSTRUCTIONS

2.1 The Sailing Instructions (“SI”) will be published on the event website Tuesday 10th of June 2025. A paper printout of SI is available for each yacht at the skippers meeting in Bergen. Thereafter, the Sailing Instructions will be available on request.
J1.3(3)

3 COMMUNICATION

3.1 The online official notice board is located www.shetlandrace.no

3.2 Skippers meeting Bergen: Tuesday 17th of June.

Skippers meeting Lerwick: Saturday 21st of June

4 ELIGIBILITY AND ENTRY

4.1 Cruising class: The event is open to all boats fulfilling safety category for the race

*J1.1(4)**

4.2 Racing Class: The event is open to all boats with valid *ORC* certificates with *0,8000 to 1,8000 APH* handicap(s).
*J1.1(4)**

4.3 The *ORC rating rules* applies to boats racing under *Racing classes*.
*J1.1(4)**

4.4 Classes are defined as follows:

Racing DH	ORC DH certificate	Class 1
Racing	ORC Std certificate	Class 2 - 4
Cruising	Scratch	

4.6 Boats may enter the event by registering online at ShetlandRace.no

4.7 To be considered an entry in the event, a boat shall complete all registration requirements and pay all fees.

4.8 Registration deadline: 1st of May 2025.
Late entries will be accepted under the following conditions:
Register within 1st of June at an extra cost of NOK 1000.

5 FEES

5.1 Entry fees [including *Lerwick Harbour Fee*] are as follows:

*J1.1(5)**

<i>Class</i>	<i>Early Entry Fee</i>	<i>Standard Fee</i>
<i>Fully crewed</i>	<i>5500</i>	<i>6000</i>
<i>Doublehand</i>	<i>4500</i>	<i>5000</i>

6 CREW LIMITATIONS

6.1 The following crew limitations apply:
Full Crew Classes - minimum 3 crewmembers.
“Double Handed” - 2 crewmembers.

7 ADVERTISING

7.1 Boats may be required to display advertising chosen and supplied by the organizing authority. See World Sailing Advertising Code.

J1.2(5)

8 SCHEDULE

8.1 Registration:

Date	From	To	Place
<i>17th of June</i>	<i>16:00</i>	<i>18:00</i>	<i>Bergen</i>

(local time)

8.2 Skippers meeting:

Date	From	To	Place
<i>17th of June</i>	<i>19:00</i>	<i>20:00</i>	<i>Bergen</i>
<i>21st of June</i>	<i>14:00</i>	<i>14:30</i>	<i>Lerwick</i>

(local time)

8.3 Equipment inspection and event measurement:

Skippers will be contacted by the safety officer.

8.4 Dates of racing:

Date	Leg	Place
<i>17th of June</i>	<i>1 To Shetland</i>	<i>Bergen</i>
<i>21st of June</i>	<i>2 To Bergen</i>	<i>Lerwick</i>

8.5 The scheduled time of warning signal for the race

Date	Leg	Time	
<i>18th of June</i>	<i>1 To Shetland</i>	<i>12:55 CEST</i>	<i>10:55 UTC</i>
<i>21st of June</i>	<i>2 To Bergen</i>	<i>16:55 BST</i>	<i>15:55 UTC</i>

10 EQUIPMENT INSPECTION

10.1 Each boat shall produce or verify the existence of a valid rating certificate.

10.3 Boats may be inspected at any time.

12 VENUE

12.1 NoR Addendum *A* shows the plan of the event venue.

12.2 NoR Addendum *B* shows the location of the racing areas.

13 COURSES

13.1 *J1.3(4)* LEG 1: The start of the race will be in outer Korsfjorden, south of Bergen, Norway and the finish will be in Lerwick Harbour, Shetland. The race is a 187 nautical mile passage race.

LEG 2: The start of the return race will be in Lerwick Harbour, Shetland and the finish will be in outer Korsfjorden, south of Bergen, Norway. The return race is a 187 nautical mile passage race.

14 PENALTY SYSTEM

14.1 For all classes RRS 44.1 is deleted.

15 SCORING

15.1 *J1.3(5)* The scoring system is as follows for each race:

Corrected times are calculated using time on time (ToT): Corrected time = Score (Time on Time factor) x Sailed time

To calculate each boat's score, the score (Time on Time factor) will be calculated using **ORC Weather Routing Scoring**.

The list of scores (Time on Time factor) will be published in the start lists on sailracesystem.no no later than 3 hrs before the warning signal.

Explanation of ORC Weather Routing Scoring can be found on the ORC website: <https://orc.org/race-managment/qa-wrs>

15.2 *Leg 1 and Leg 2 are separate races.*

21 DATA PROTECTION

21.1 GDPR regulation is in charge.

22 RISK STATEMENT

- 22.1 RRS 3 states: ‘The responsibility for a boat’s decision to participate in a race or to continue to race is hers alone.’ By participating in this event each competitor agrees and acknowledges that sailing is a potentially dangerous activity with inherent risks. These risks include strong winds and rough seas, sudden changes in weather, failure of equipment, boat handling errors, poor seamanship by other boats, loss of balance on an unstable platform and fatigue resulting in increased risk of injury. **Inherent in the sport of sailing is the risk of permanent, catastrophic injury or death by drowning, trauma, hypothermia or other causes.** .

23 INSURANCE

- 23.1 Each participating boat shall be insured with valid third-party liability insurance.

24 PRIZEGIVING

- 24.1 Prize giving Lerwick: Friday 20th of June.
J1.3(10) .

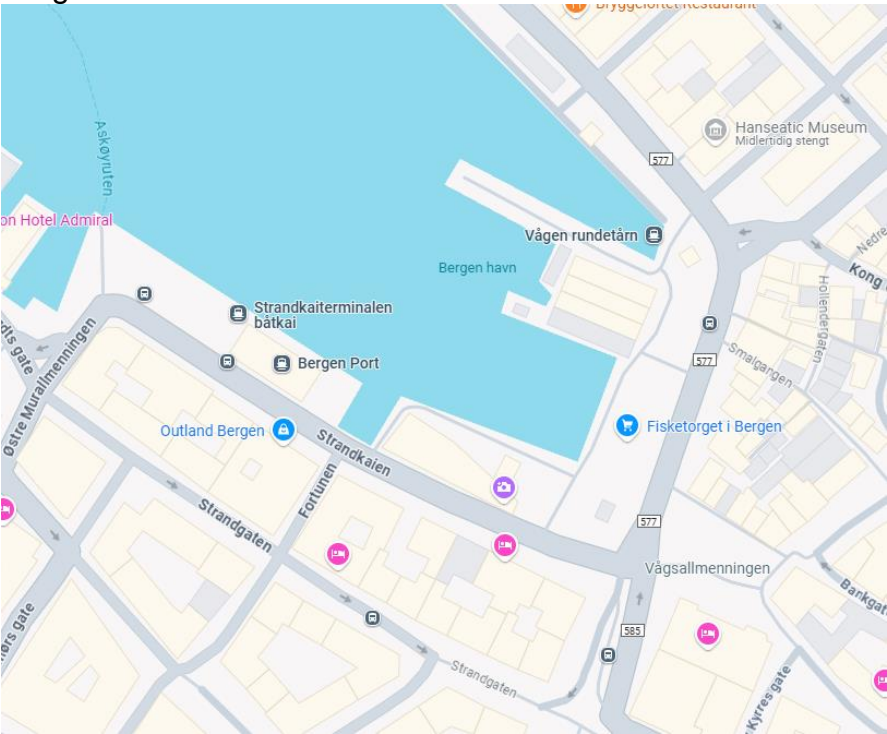
25 FURTHER INFORMATION

- 25.1 For further information please contact:

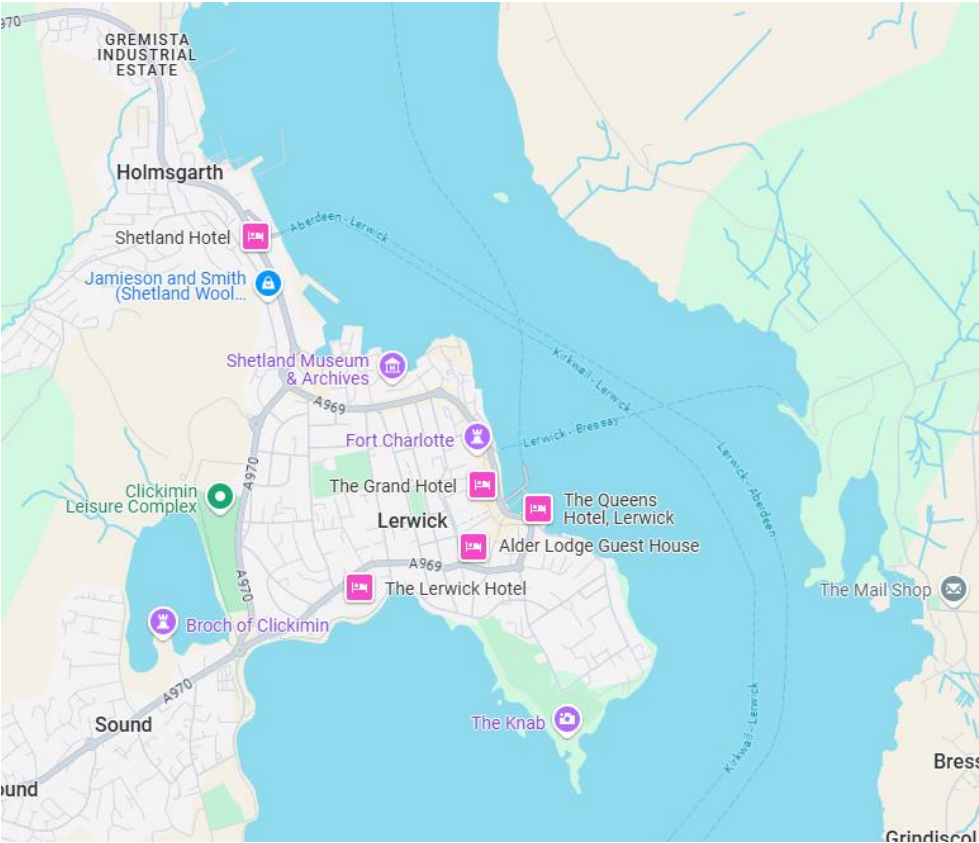
Vestland Sailing Association
C/O Carl Olav Wickmann
Norway Tel: +47 413 26 639
www.shetlandrace.no
post@shetlandrace.no

Addendum A – Venues:

Bergen Harbour

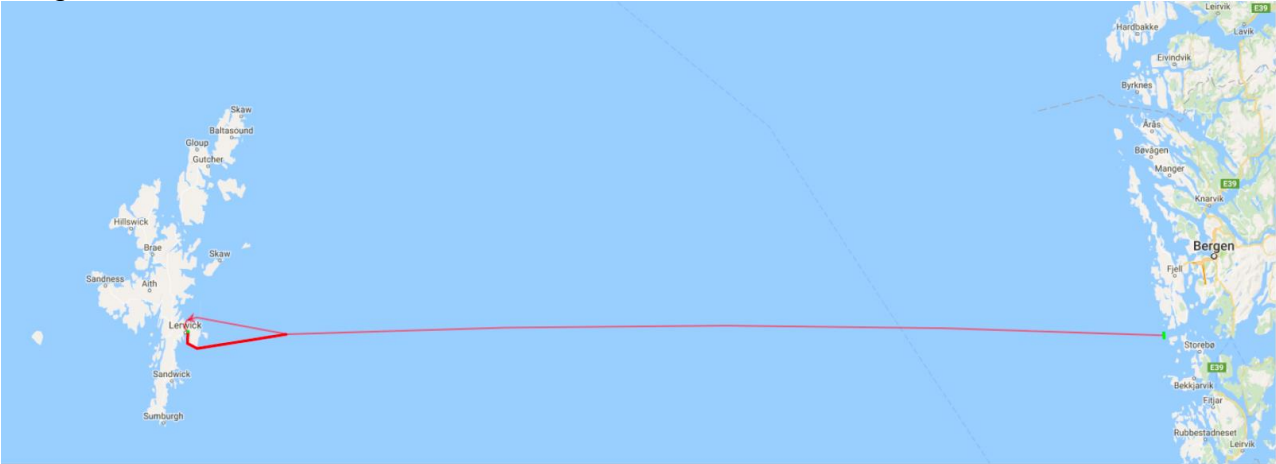


Lerwick Harbour



Addendum B- Courses:

Bergen to Shetland:



Shetland to Bergen

